

RIGID SPA & ITS HIGH-END FURNITURE



NEW
2019

Netspa Octopus
The spa and its braided furniture

QUALITY, DESIGN, SERVICE AND PRICE

NETSPA IS CLEARLY DIFFERENT!

NetSpa's aim is to allow anyone to create a wellness space in their own home. Our range of portable inflatable spas combine technology, design and quality.

NETSPA ADVANTAGES

- Larger dimensions for greater comfort.
- Original, modern design combined with solid, high-quality materials.
- State-of-the-art technology for low consumption costs.
- Complete packs with a protective tarpaulin, insulated cover and two filter cartridges.
- Personalised service with numerous instructional videos, customer support and a highly innovative maintenance solution.

CONTENT

**NEW
2019**



**OCTOPUS
P.120**



**CAÏMAN
P.122**



**PYTHON
P.123**

PREMIUM RANGE



**ASPEN
P.124**



**SILVER
P.125**

Netspa



**MONTANA
P.126**



**MALIBU
P.127**



**ACCESSORIES
P.130**



**VITA PREMIUM
P.128**

INFLATABLE SPA

Octopus

Grossist / Wholesale: Crossborder International AB
Phone: 0046-0(8)-590 77 660
Email: order@crossborderinternational.com



NEW
2019



SPA PORTABLE

OCTOPUS

STRUCTURE
**SEMI-
RIGID**

EASY
ASSEMBLY

**ULTRA
DEEP**

FILTRATION
HEATING
RELAXING BUBBLES

A high-end spa, now within reach!

A major innovation in the Netspa line.

The Octopus jacuzzi flawlessly combines the advantages of a large 4-6 person jacuzzi, with the outside dimensions of a 4-person inflatable jacuzzi. Its structure, made of 13 cm foam panels, assembles in just a few minutes to simultaneously provide the required rigidity as well as the indispensable insulation and comfort. The interior liner incorporates an insulating mat, as well as vertical bubble channels, ideal for relaxing the back. Its intelligent Netspa motor block, provides heating, filtration and also relaxing bubbles, for less maintenance and more pleasure than ever.



BENEFITS

VERY DEEP JACUZZI,
FOR FULL IMMERSION OF THE NECK AND SHOULDERS

TRIPLE FUNCTION
MASSAGE / HEATING / FILTRATION

INTELLIGENT & ECONOMICAL MOTOR

10mA ELECTRICAL PROTECTION

100% SAFE INSULATING COVER

EASY TO INSTALL AND USE

OPTIMISED INSULATION

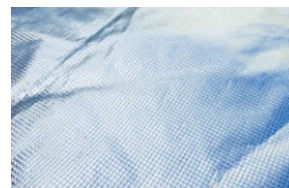
FEATURES

| | |
|--------------------|---|
| Reference | SP-OCT165 |
| Capacity | 4+2 persons |
| Dimensions | Ø 193 x H 73 cm |
| Inside dimensions | Ø 165 x H 73 cm |
| Water volume | 1,000 litres |
| Net weight (empty) | 36 kg |
| Air nozzles | 100 |
| Temperature gain | 1.5 - 3 °C/hour |
| Power supply | 240 V ~ 50 Hz |
| Heating | 1,500 W |
| Liner | 0.6 mm beaded PVC interior Braided PVC exterior |
| Cover | Double insulation for the heater |
| Filter pump | 40 W |
| Filtration | Filtration block + 1 anti-bacterial cartridge included |
| Guarantee | Structure and electronics 2 years Poolstar After-Sales Service |

EQUIPMENT & ACCESSORIES



Insulating foam structure (13 cm thickness)



Insulating cover



Massaging vertical bubbles for the back



Safe closing system



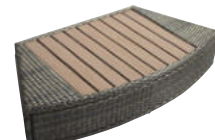
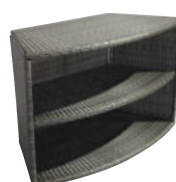
Exterior casing in braided PVC



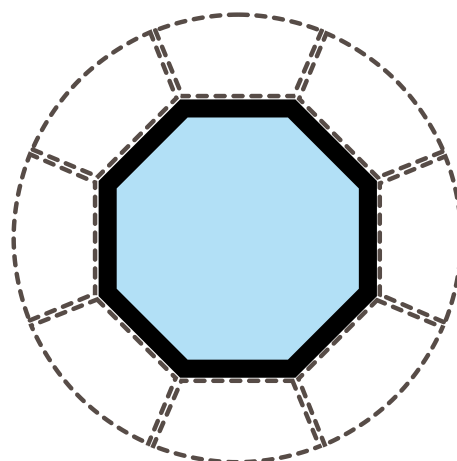
1 Bacti-Stop filter cartridge included

OPTIONAL FURNITURE

5 ELEMENTS TO CHOOSE FROM



YOUR CUSTOMISABLE JACUZZI



INFLATABLE SPA

Caïman

4 PERSONS

Grossist / Wholesale: Crossborder International AB
Phone: 0046-(0)8-590 77 660
Email: order@crossborderinternational.com



PRESTIGE CLOTHING
LEATHERETTE



INFLATABLE SPA

CAÏMAN

An inflatable spa that is both highly effective and elegant

Enjoy a session in the Caïman spa for up to 4 persons. The liner has a matt black imitation leather finish with a crocodile motif which gives this spa an understated yet extremely elegant touch. Its 'smart' motor unit combines the heating, filtration and massaging bubbles functions to provide simple intuitive operation.

SPECIFICATIONS

| | |
|----------------------|---|
| Ref: | SP-CAM130C |
| Capacity | 4 persons |
| Dimensions | L 168 x W 168 x H 70 cm |
| Internal dimensions | L 125 x W 125 x H 70 cm |
| Volume of water | 700 litres |
| Weight (empty) | 27kg |
| Air nozzles | 110 |
| Temperature increase | 1.5-2.5°C/hr |
| Electricity supply | 240 V ~ 50 Hz |
| Heating | 1500W |
| Liner | Interior : perl PVC 0.6mm Exterior cladding laminated PVC 0.8mm |
| Protection | Double insulation from heater |
| Filtration | Includes filtration unit + 1 cartridge |
| Filtration pump | 40W |
| Warranty | Inflatable elements and electronics 2 years Poolstar after-sales service |

FEATURES

GENEROUS IMITATION LEATHER FINISH

DOUBLE HEATER PROTECTION

TRIPLE FUNCTION

MASSAGE / HEATING / FILTRATION

'SMART' ECONOMICAL MOTOR

EASY AND FAST INSTALLATION

BUILT-IN INFLATOR

EQUIPMENT AND ACCESSORIES



Electrical socket with
10mA differential protection



Safe, insulated cover



Square shape: compact &
elegant



Unique design with imitation
leather finish



Includes 1 anti-bacterial
filter cartridge



5 TO 6 PERSONS

INFLATABLE SPA Python

PRESTIGE CLOTHING
LEATHERETTE



INFLATABLE SPA

PYTHON

Comfortable, fashionable and simple

You will like the Python spa's octagonal shape, perfect for 5 persons, and its trendy design. The spa's exterior has a matt black imitation leather finish with a crocodile motif which gives an elegant touch to your relaxation area. And get the benefit of its 'smart' motor unit which combines the heating, filtration and massaging bubbles.

SPECIFICATIONS

| | |
|----------------------|---|
| Ref: | SP-PYT155C |
| Capacity | 5/6 persons |
| Dimensions | 185 x 185 X H 70 cm |
| Internal dimensions | 145 x 145 X H 70 cm |
| Volume of water | 850 litres |
| Weight (empty) | 30kg |
| Air nozzles | 130 |
| Temperature increase | 1.5-2.5°C/hr |
| Electricity supply | 240 V ~ 50 Hz |
| Heating | 1500W |
| Liner | Liner per l PVC 0.6mm Exterior cladding laminated PVC 0.8mm |
| Protection | Double insulation from heater |
| Filtration | Includes filtration unit + 1 cartridge |
| Filtration pump | 40W |
| Warranty | Inflatable elements and electronics 2 years Poolstar after-sales service |



FEATURES

GENEROUS IMITATION LEATHER FINISH

DOUBLE HEATER PROTECTION

TRIPLE FUNCTION

MASSAGE / HEATING / FILTRATION

'SMART' ECONOMICAL MOTOR

EASY AND FAST INSTALLATION

BUILT-IN INFLATOR

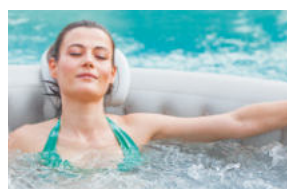
EQUIPMENT AND ACCESSORIES



Electrical socket with
10mA differential protection



Safe, insulated cover



130 air jets



New generation motor unit



Includes 1 anti-bacterial
filter cartridge

INFLATABLE SPA Aspen

4 PERSONS



INFLATABLE SPA

ASPEN

The perfect inflatable spa for small spaces

The Aspen square-shaped inflatable spa is compact and ideal for 4 people. Elegant but rugged, the Aspen has a heavy-duty textured laminated PVC outer covering and a pearl coloured interior liner.

The Aspen is supplied with a 'smart', economical motor unit providing three functions: Heating, Massage and Filtration. You'll love the design, adore the bubbles and appreciate the small price tag!

SPECIFICATIONS

| | |
|----------------------|---|
| Ref: | SP-ASP130C |
| Capacity | 4 persons |
| Dimensions | L 168 x W 168 x H 70 cm |
| Internal dimensions | L 128 x W 128 x H 70 cm |
| Volume of water | 700 litres |
| Weight (empty) | 27kg |
| Air nozzles | 110 |
| Temperature increase | 1.5-2.5°C/hr |
| Electricity supply | 240 V ~ 50 Hz |
| Heating | 1500W |
| Liner | Interior : perl PVC 0.6mm Exterior: laminated PVC 0.8mm |
| Protection | Double insulation from heater |
| Filtration | Includes filtration unit + 1 cartridge |
| Filtration pump | 40W |
| Warranty | Inflatable elements and electronics 2 years Poolstar after-sales service |



FEATURES

TRIPLE FUNCTION

MASSAGE / HEATING / FILTRATION

DOUBLE HEATER PROTECTION

'SMART' ECONOMICAL MOTOR

EASY AND FAST INSTALLATION

BUILT-IN INFLATOR

EQUIPMENT AND ACCESSORIES



Thermally insulated base



Safe, insulated cover



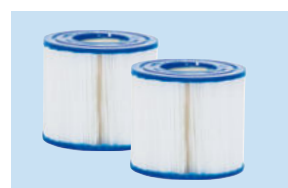
Electric socket with 10 mA earth leakage protection



Unique design with textured finish



Square shape: compact & elegant



2 filter cartridges included

5 TO 6 PERSONS

INFLATABLE SPA Silver



INFLATABLE SPA

SILVER

Innovative, Trendy and Comfortable

NetSpa's SILVER spa has been created with an innovative and fashionable octagonal design, while paying particular attention to its users' comfort.

Its dimensions are perfect for providing the ideal space for 5 persons (exterior 195cm/interior 155cm).

FEATURES

TRIPLE FUNCTION

MASSAGE / HEATING / FILTRATION

DOUBLE HEATER PROTECTION

'SMART' ECONOMICAL MOTOR

EASY AND FAST INSTALLATION

BUILT-IN INFLATOR

SPECIFICATIONS

| | |
|----------------------|--|
| Ref: | SP-SLV155C |
| Capacity | 5/6 persons |
| Dimensions | 185 x 185 X H 70 cm |
| Internal dimensions | 145 x 145 X H 70 cm |
| Volume of water | 850 litres |
| Weight (empty) | 30kg |
| Air nozzles | 130 |
| Temperature increase | 1.5-2.5°C/hr |
| Electricity supply | 240 V ~ 50 Hz |
| Heating | 1500W |
| Liner | Interior : perl PVC 0.6mm Exterior: laminated PVC 0.8mm |
| Protection | Double insulation from heater |
| Filtration | Includes filtration unit + 1 cartridge |
| Filtration pump | 40W |
| Warranty | Inflatable elements and electronics 2 years Poolstar after-sales service |

EQUIPMENT AND ACCESSORIES



Thermally insulated base



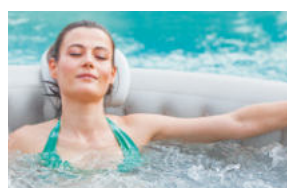
Safe, insulated cover



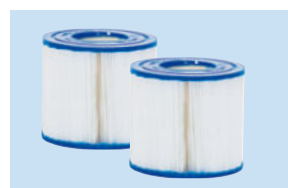
Electric socket with 10 mA earth leakage protection



New generation motor unit



130 air jets



2 filter cartridges included



INFLATABLE SPA

Montana

4 TO 6 PERSONS



INFLATABLE SPA

MONTANA

The benchmark in inflatable spas

Its original design truly enhances your indoor or outdoor space. Designed with a heavy-duty laminated PVC outer covering and a pearl coloured interior liner, this spa combines technology and sturdiness.

Available in two sizes – for 4 and 6 people – the Montana has an external motor unit for efficient filtering, an effective massage function and rapid, powerful heating system.

FEATURES

DOUBLE HEATER PROTECTION

TRIPLE FUNCTION

MASSAGE / HEATING / FILTRATION

'SMART' ECONOMICAL MOTOR

EASY AND FAST INSTALLATION

BUILT-IN INFLATOR

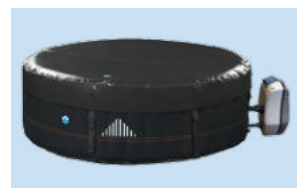
SPECIFICATIONS

| | | |
|----------------------|---|-----------------|
| Ref: | SP-MTA135 | SP-MTA165 |
| Capacity | 4 persons | 6 persons |
| Dimensions | Ø 175 x H 70 cm | Ø 204 x H 70 cm |
| Internal dimensions | Ø 130 x H 70 cm | Ø 160 x H 70 cm |
| Volume of water | 700 litres | 930 litres |
| Weight (empty) | 25kg | 30kg |
| Air nozzles | 110 | 140 |
| Temperature increase | 1.5-2.5°C/hr | |
| Electricity supply | 240 V ~ 50 Hz | |
| Heating | 1500W | |
| Liner | Interior : perl PVC 0.6mm Exterior: laminated PVC 0.8mm | |
| Protection | Double insulation from heater | |
| Filtration | Includes filtration unit + 1 cartridge | |
| Filtration pump | 40W | |
| Warranty | Inflatable elements and electronics 2 years Poolstar after-sales service | |

EQUIPMENT AND ACCESSORIES



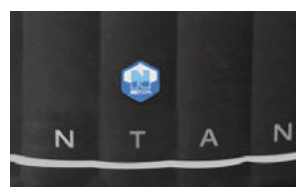
Thermally insulated base



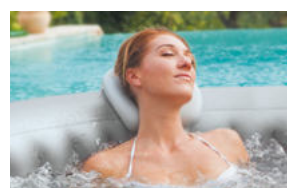
Safe, insulated cover



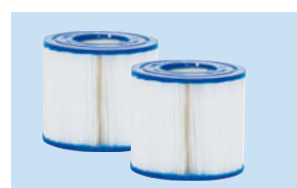
Electrical socket with
10mA differential protection



Unique design with textured
finish



110/140 air jets



2 filter cartridges included

4 TO 6 PERSONS

INFLATABLE SPA Malibu



INFLATABLE SPA

MALIBU

Design & performance

With its clean, modern design, this 4 or 6-person inflatable spa will fit perfectly into a contemporary or traditional space. With its ultra-resistant laminated PVC outer and pearl interior liner, the Malibu spa is the perfect place for the family to enjoy some unforgettable moments of relaxation.

Like the other models in the NetSpa range, the Malibu has a smart, economical external motor unit, with three functionalities: Heating, Massage and Filtration.

FEATURES

DOUBLE HEATER PROTECTION

TRIPLE FUNCTION

MASSAGE / HEATING / FILTRATION

'SMART' ECONOMICAL MOTOR

EASY AND FAST INSTALLATION

BUILT-IN INFLATOR

SPECIFICATIONS

| | | |
|----------------------|---|-----------------|
| Ref: | SP-MBU135 | SP-MBU165 |
| Capacity | 4 persons | 6 persons |
| Dimensions | Ø 175 x H 70 cm | Ø 204 x H 70 cm |
| Internal dimensions | Ø 130 x H 70 cm | Ø 160 x H 70 cm |
| Volume of water | 700 litres | 930 litres |
| Weight (empty) | 25kg | 30kg |
| Air nozzles | 110 | 140 |
| Temperature increase | 1.5-2.5°C/hr | |
| Electricity supply | 240 V ~ 50 Hz | |
| Heating | 1500W | |
| Liner | Interior : perl PVC 0.6mm Exterior: laminated PVC 0.8mm | |
| Protection | Double insulation from heater | |
| Filtration | Includes filtration unit + 1 cartridge | |
| Filtration pump | 40W | |
| Warranty | Inflatable elements and electronics 2 years Poolstar after-sales service | |

EQUIPMENT AND ACCESSORIES



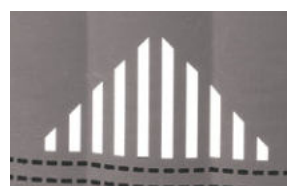
Thermally insulated base



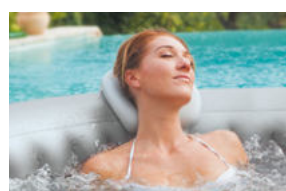
Safe, insulated cover



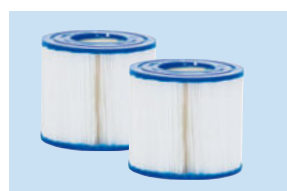
Electric socket with 10 mA
earth leakage protection



Unique design with textured
finish



110/140 air jets



2 filter cartridges included

Netspa

PORTABLE SPA Vita Premium

6 PERSONS

Grossist / Wholesale: Crossborder International AB
Phone: 0046-(0)8-590 77 660
Email: order@crossborderinternational.com



PORTABLE SPA

VITA PREMIUM

**SEMI-
RIGID**
FRAME

EASY
ASSEMBLY

**ULTRA
DEEP**

FILTRATION
HEATING
RELAXING BUBBLES

The ideal alternative

The Vita Premium from NetSpa is an innovation in the world of spas. This spa is semi-rigid, making it the perfect solution for anyone looking for a portable spa at an ultra-competitive price! Built with eight walls made from 13 cm insulating foam, this spa is wrapped in an external liner made from 8 mm thick imitation leather. This extra-deep (73cm) spa meets the highest standards so you can immerse your torso completely for a full massage. With an integrated filter in the motor unit, the internal space has been optimised for 4 to 6 people.

FEATURES

VERY DEEP
NECK AND SHOULDER TOTALLY IMMERSED

TRIPLE FUNCTION
MASSAGE / HEATING / FILTRATION

'SMART' ECONOMICAL MOTOR

ELECTRICAL PROTECTION

100% SECURE INSULATED COVER

EASY TO INSTALL AND USE

IMPROVED INSULATION

EASY ASSEMBLY



SPECIFICATIONS

| | |
|----------------------|---|
| Ref: | SP-VIP160 |
| Capacity | 6 persons |
| Dimensions | Ø 184 x H 73 cm |
| Internal dimensions | Ø 160 x H 73 cm |
| Volume of water | 1100 litres |
| Weight (empty) | 46kg |
| Air nozzles | 88 |
| Temperature increase | 1.5-2.5°C/hr |
| Electricity supply | 240 V ~ 50 Hz |
| Heating | 1500W |
| Liner | Interior : perl PVC 0.6mm Exterior: laminated PVC 0.8mm |
| Protection | Double insulation from heater |
| Filtration pump | 40W |
| Warranty | Structure and electronics 2 years Poolstar after-sales service |

EQUIPMENT AND ACCESSORIES



Foam insulating structure
(13 cm thick)



Isothermal inflatable cover
(25 cm thick)



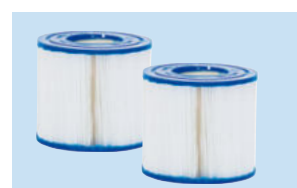
Electric socket with 10 mA
earth leakage protection



Secure closure system



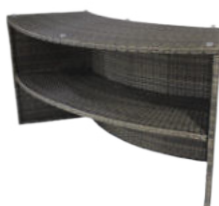
Interior and exterior liner



2 filter cartridges included

OPTIONAL FURNITURE

5 ELEMENTS TO CHOOSE FROM



ACCESSORIES

optional accessories

HEADREST & CUP HOLDER

SP-N1405173

Set of 2 headrests
+ 1 cup-holder for NetSpa inflatable spa.



2 IN 1 HEADREST & CUP HOLDER

SP-N1405180

Set of 2 headrests and cup holder (2 in 1)
for Vita Premium spa.



INFLATABLE FOOT RINSE

SP-N1405548

Foot rinse for clean, clear water. Dim. 87 x 68 x 14 cm.



COMFORT SEAT CUSHIONS

SP-N1405197

Set of 2 cushions to fill with water for a comfortable seat.
Dim. 45 x 38 x 10 cm.



INFLATABLE BAR

SP-N1405227

5 beverage holders and a large central compartment for storing ice cubes, bottles and snacks.
Diameter 64 cm.



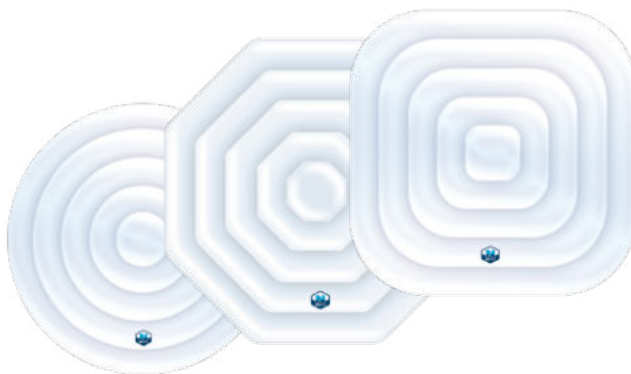
INFLATABLE LID

SP-N1405173 - 5 persons (square)

SP-N1405203 - 4 persons (round)

SP-N1407528 - 5/6 persons (octagonal)

SP-N1405210 - 6 persons (round)



SPA SPOTLIGHT

SP-N1407542

Sealed low voltage lamp fitted with rechargeable battery. Add colour to your spa! Compatible with all spas.



NETSPA CLEANER SUPERVAC

NS-CLEANER-25

Electric cordless rechargeable vacuum for spas and small pools. Supplied with a telescopic pole, Li-Ion battery and large capacity filter. Electronics warranty: 2 years



NETSPA CLEANER

NS-CLEANER-13

Electric cordless rechargeable vacuum for spas and small pools. Electronics warranty: 2 years



NETSPA ACTIVE OXYGEN

SP-NOXYTAB-20

Universal treatment for active oxygen spas. 20 x 20g tablets.



FILTER CARTRIDGES

SP-N1407535

Set of 3 new generation cartridges

SP-N1408425

Filter unit holder (with cartridge)



FILTER CARTRIDGES

SP-N1408778

Set of 3 anti-bacterial cartridges for inflatable spas

SP-N1408785

Set of 3 anti-bacterial cartridges for Vita Premium





Brava lounge
Design and sturdiness

POOL AND GARDEN FURNITURE

Our range of pool and garden furniture offers you new opportunities for additional sales.

Our materials are selected to provide increased strength and durability. Our designs meet all requirements and blend into both traditional and modern exteriors.

COSTA sun loungers are fitted with a **Serge Ferrari** composite fabric that provides support that is both firm and comfortable.

The **BRAVA** collection is designed in basket weave pattern reinforced fibreglass resin **protected against UV radiation** to withstand the fiercest summer conditions.

All the recliners are stackable for easier storage.

contents



COSTA
P.134



BRAVA
P.135

GARDEN FURNITURE

Costa/Brava lounge

4 COLOURS AVAILABLE



COSTA

WARRANTY
3 YEARS

COSTA SUN LOUNGER

4 COLOURS
TO CHOOSE
FROM

UV-RESISTANT

2 BUILT-IN
WHEELS

BACKREST
5 POSITIONS

The Costa collection is made of fibreglass reinforced resin designed to be weather-resistant.

The Costa sun lounge is fitted with a Serge Ferrari composite fabric that provides support that is both firm and comfortable, perfect for enjoying the sun to the full. Its backrest offers 5 adjustable positions and it has non-slip feet and wheels for easy movement. This recliner's modern design and robust construction will satisfy the most discerning customers.

Costa recliners are stackable for easier storage.

FEATURES

FIBREGLASS REINFORCED RESIN
5-POSITION ADJUSTABLE BACKREST
NON-SLIP FEET
TRANSPORT WHEELS
SERGE FERRARI 500 G/M² BATYLINE ISO FABRIC
STACKABLE

WARRANTIES

**WARRANTY 3 YEARS, LIMITED TO 2 YEARS
IF USED IN A COMMERCIAL CONTEXT**

COMPOSITE FABRIC

Serge Ferrari



Serge Ferrari produces innovative high-quality composite materials with a wide variety of properties.

- Does not tear, extremely tough
- Excellent resistance to outdoor conditions
- Maintains constant tightness
- Consistency of weave, guaranteed finishes
- Stays cool in summer, dries very quickly

SPECIFICATIONS

| | |
|------------------------|--|
| Costa recliner | GD-COSSL |
| Dimensions | I 68 x L 193 x H 35 cm |
| Available in 4 colours | Black/Anthracite – White/Yellow White/White - White/Turquoise |
| Weight | 16.5kg |
| Maximum weight | 110kg |
| Costa Table | GD-COSST |
| Dimensions | I 45 x L 45 x H 45 cm |
| Available in 4 colours | Anthracite - White - Cream |
| Weight | 2.8kg |


BRAVA WARRANTY 3 YEARS

BRAVA SUN LOUNGER

**REINFORCED
RATTAN TEXTURE**
UV-RESISTANT
**2 BUILT-IN
WHEELS**
**BACKREST
5 POSITIONS**

The Brava collection is designed in basket weave pattern fibreglass reinforced resin.

This flexible yet strong material helps withstand the fiercest summer conditions. Protected against UV rays, it does not lose its colour.

The Brava sun lounger has a 5-position adjustable backrest and hidden wheels in the feet.

For the perfect seating position, the Brava sun lounger can be supplemented with a comfort mattress (optional).

It is also possible to stack several recliners for easy storage.



FEATURES

FIBREGLASS REINFORCED RESIN

5-POSITION ADJUSTABLE BACKREST

NON-SLIP FEET

TRANSPORT WHEELS

STACKABLE

OPTIONAL COMFORT MATTRESS

WARRANTIES

**WARRANTY 3 YEARS, LIMITED TO 2 YEARS
IF USED IN A COMMERCIAL CONTEXT**

SPECIFICATIONS

| | |
|-----------------------|-----------------------|
| Brava recliner | GD-BRASL |
| Dimensions | 173 x L 187 x H 44 cm |
| Weight | 14kg |
| Maximum weight | 110kg |
| Brava Table | GD-BRAST |
| Dimensions | 145 x L 45 x H 45 cm |
| Weight | 2.8kg |